

# HE1RSS



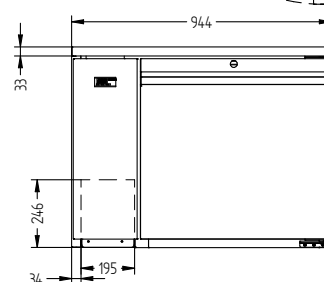
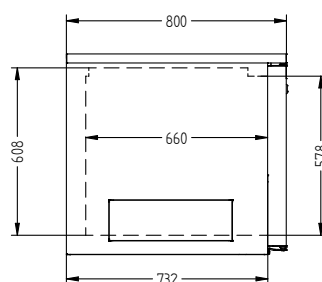
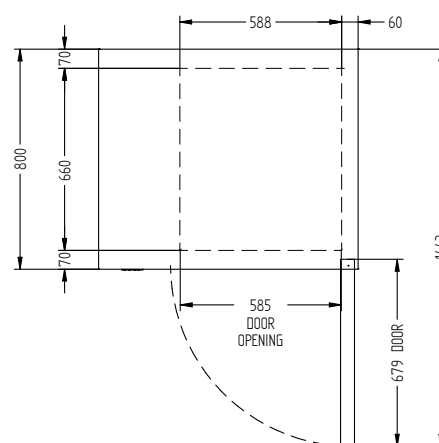
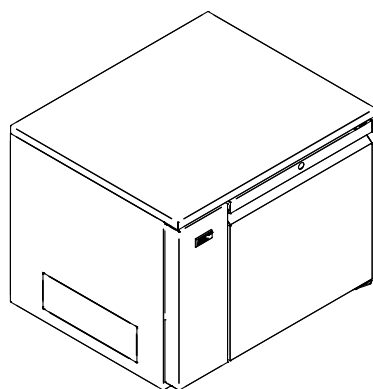
CATEGORY FOODSERVICE COUNTERS

RANGE **Emerald**

UNIT REFRIGERATOR

TYPE REMOTE

DOORS 1



## SPECIFICATIONS

CAPACITY LITRES	310
TEMPERATURE	1°C / 4°C
DIMENSIONS - W X D X H (ON 150 MM H LEGS)	944 W x 800 D x 880 H
WEIGHT UNPACKED (KG)	110

## STANDARD INCLUSIONS \*\*\*

DOOR TYPE	Standard: SD (Solid Door) Optional: DR (Drawer), PT (Pass Through)
FINISH (INTERIOR AND EXTERIOR EXCLUDING REAR AND UNDER)	SS (Stainless Steel)
SHELVES/DOOR	2

## ELECTRICAL

POWER SUPPLY		10 amp
FRIDGE MODELS	RUNNING AMPS	0.4

## GAS TYPE

REFRIGERANT	FRIDGE MODELS	R404a
-------------	---------------	-------

## REFRIGERATION WATTAGES FOR REMOTE UNITS

FRIDGE MODELS - SOLID DOOR	350 @ -5°C SST
----------------------------	----------------

\*\*\* For **OPTIONS** refer to the current Williams Price Guide